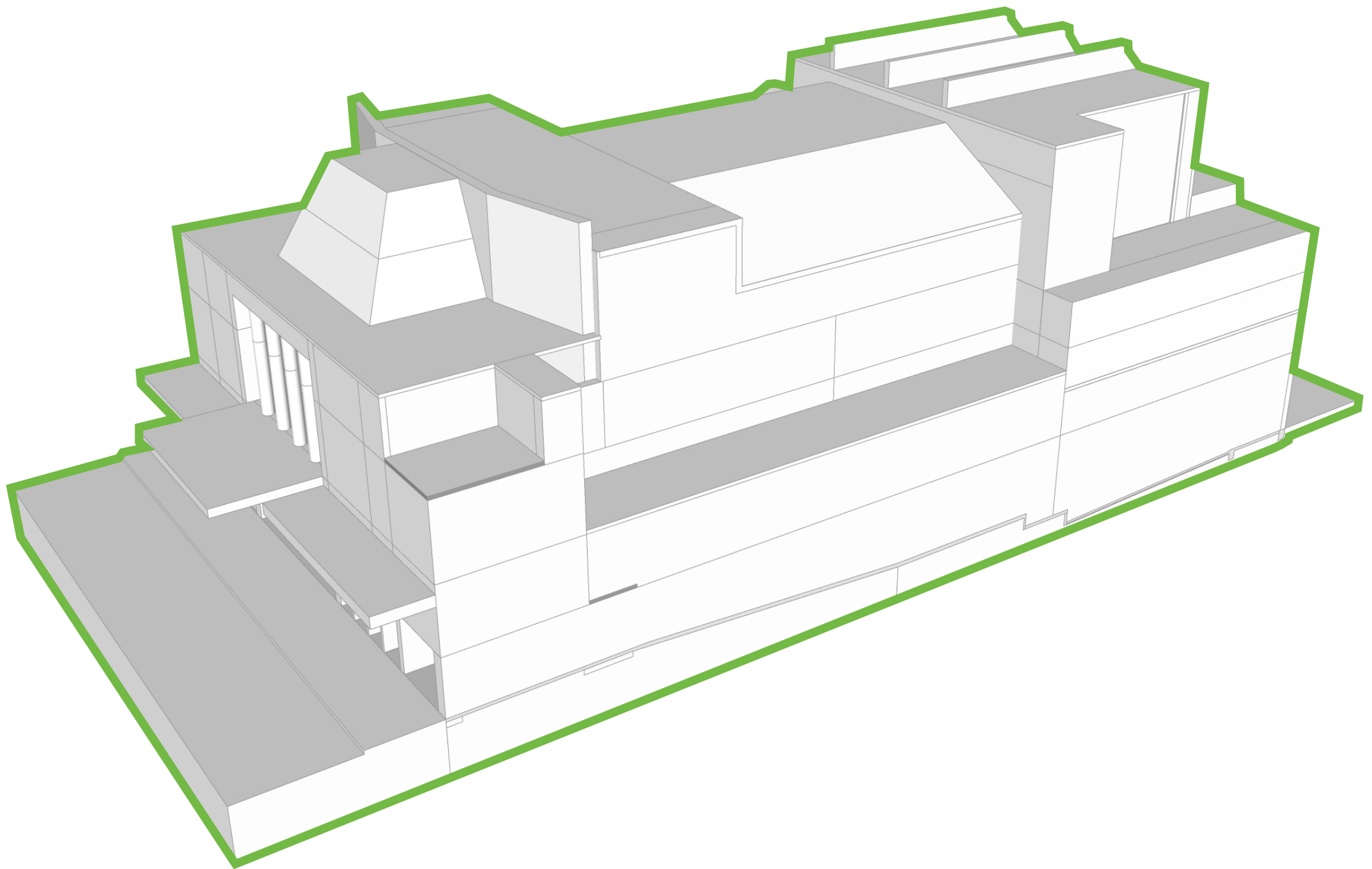




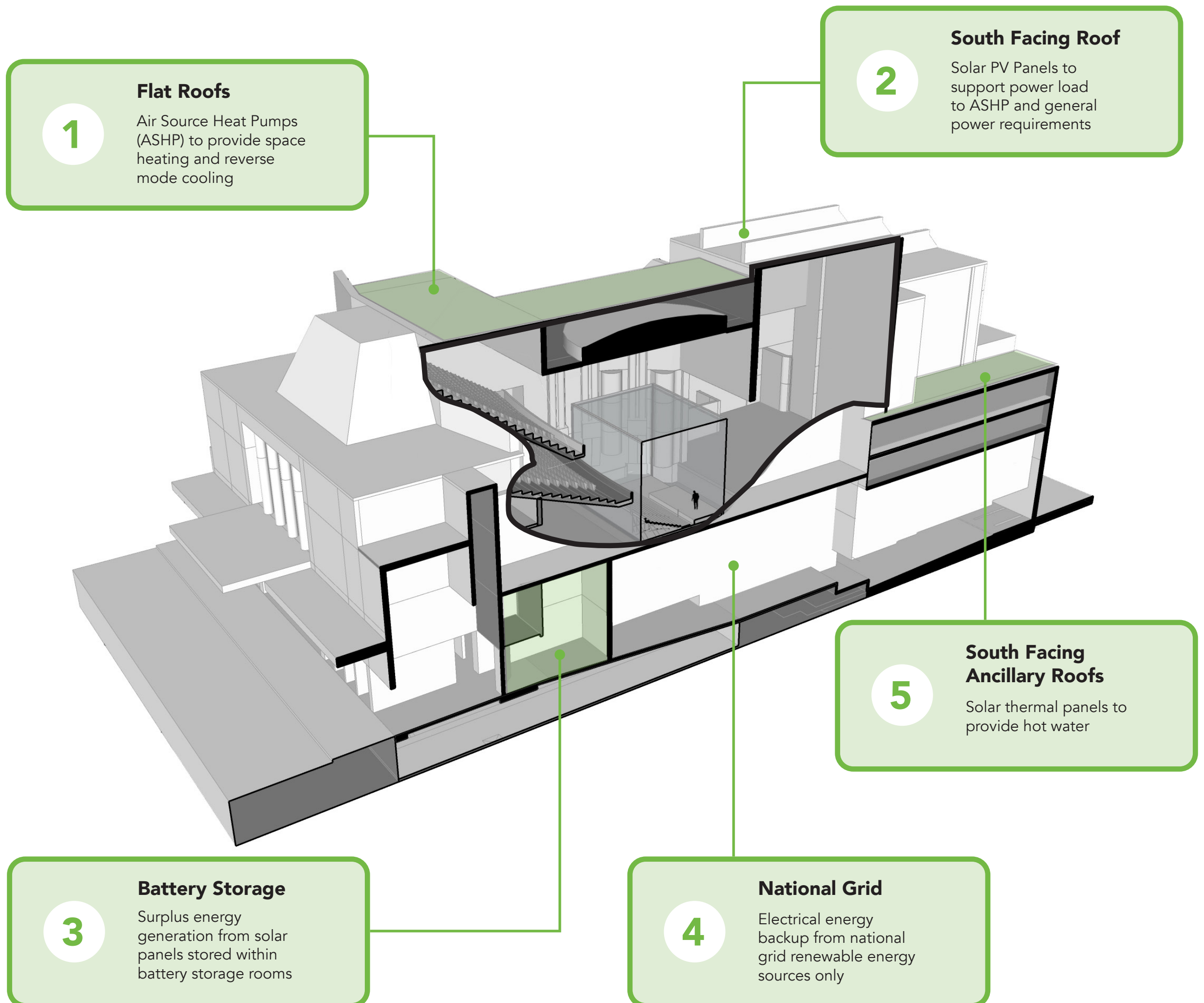
# STREATHAM HILL THEATRE

sustainability vision

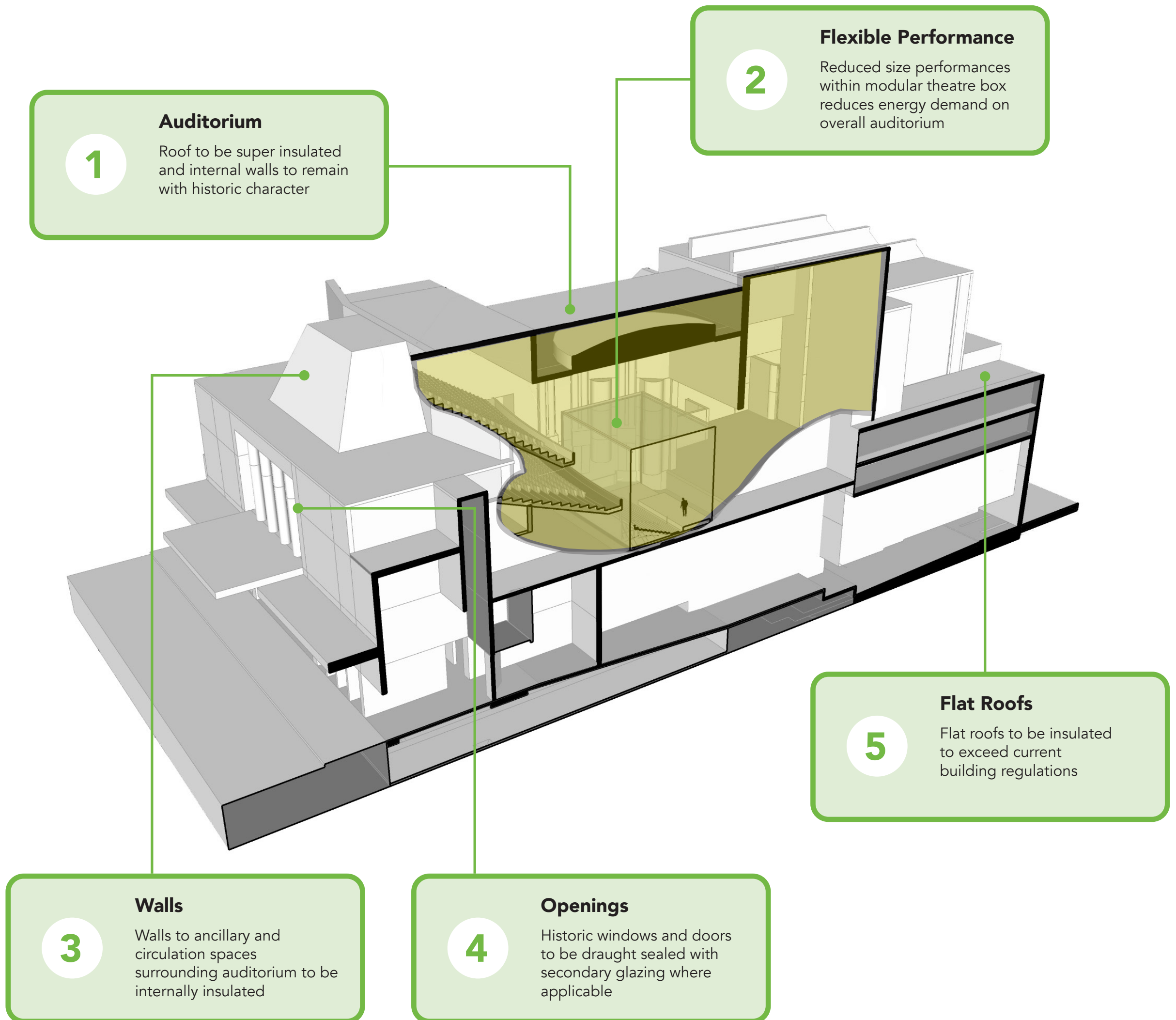
**Our vision to create a zero carbon  
multi purpose arts and cultural centre**



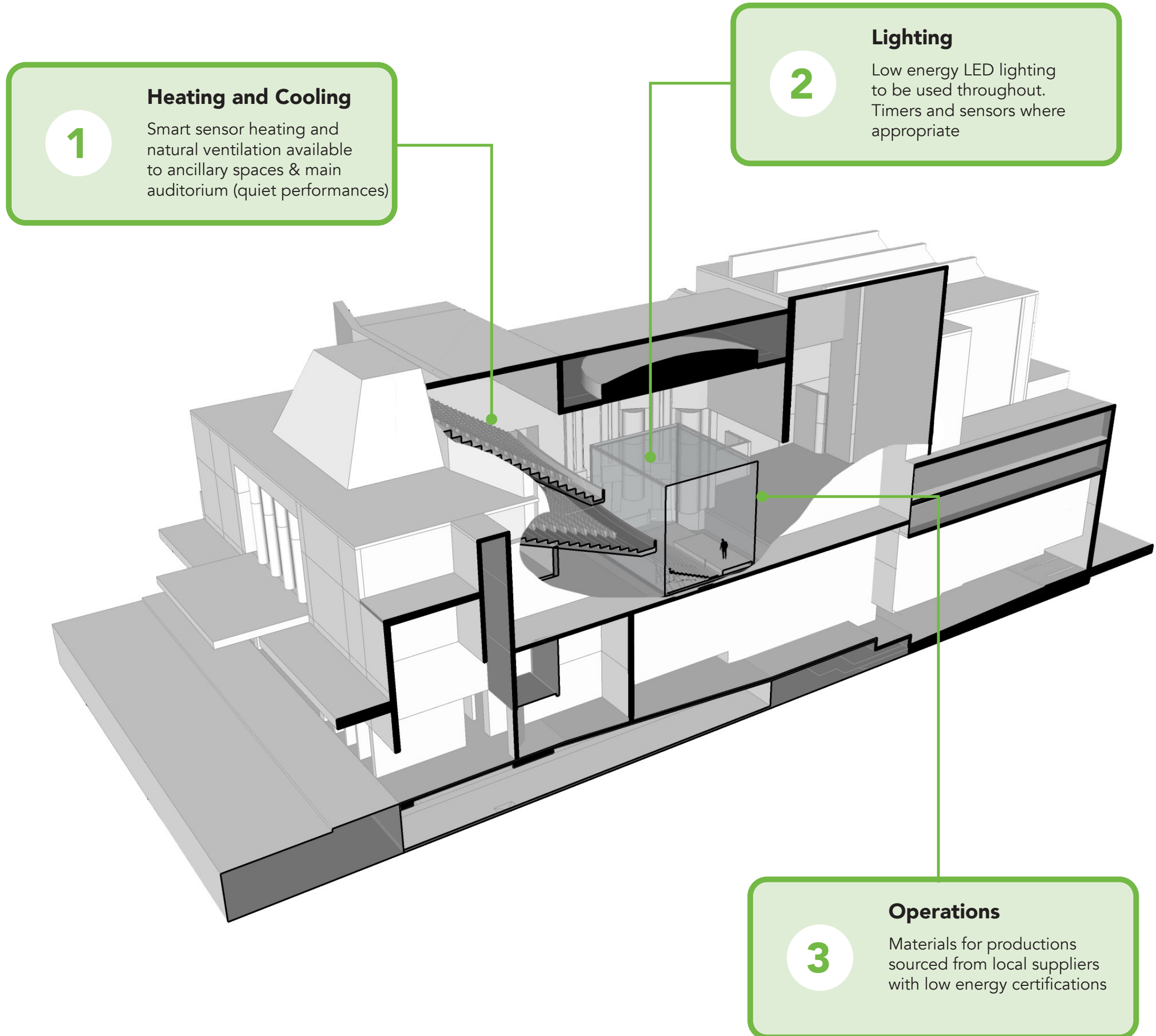
# ENERGY DEMAND



# FABRIC ENHANCEMENTS



# OPERATIONAL CARBON



# EMBODIED CARBON

“Embodied carbon is the carbon dioxide emissions associated with materials and construction processes throughout the whole lifecycle of a building or infrastructure”

1

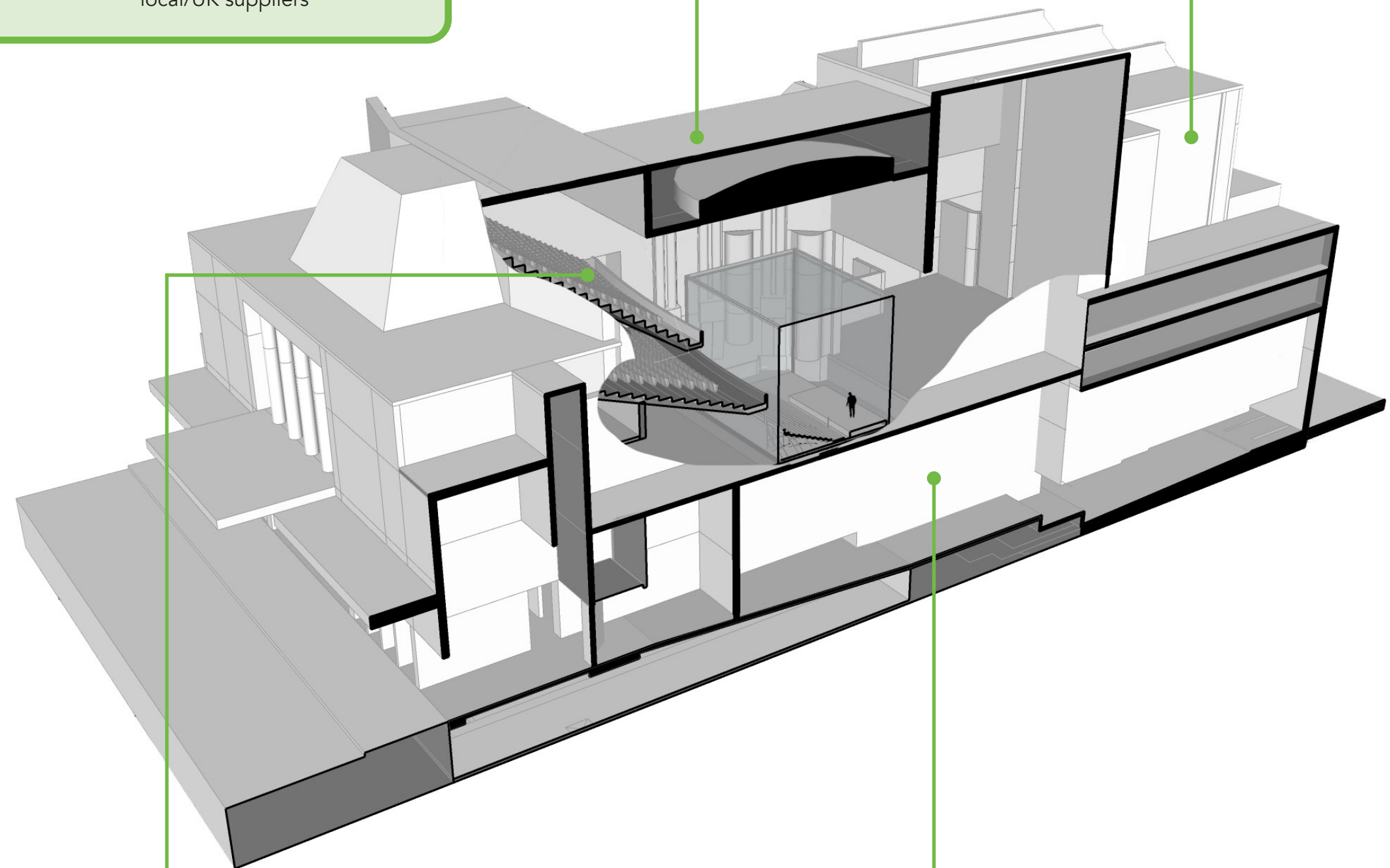
## Furniture & Fixtures

New furniture and fixtures to be made from re-purposed or recycled materials from local/UK suppliers

2

## Demolition

Any material (bricks / steel / timber) from structural alterations to be re-used or recycled



3

## Finishes

Natural (Low VOC) breathable materials eg clay plaster and concrete alternatives used for floors and walls

4

## Mechanical Plant

Low-Tech systems to be implemented that are not energy intensive in manufacture or maintenance

# ECOLOGY AND WATER

